



Additional Support

Additional Learning Support

Additional Learning Support is offered to all learners who require direct support over and above that which is normally provided in a standard learning programme.

- In-course support for individuals and small groups provided through learning support assistants particularly on level 1 courses
- Small group sessions in Skills Development Centres
- Self referral or tutor referral to Skills Development Centres
- In course support provided by specialist literacy/numeracy staff

We can also provide support with

- Special Exam Arrangements
e.g. extra time, readers/writers
- Additional Specialist Support
e.g. teacher for hearing impaired, note takers
- Adapted Learning Materials
e.g. enlarged photocopies, coloured paper
- Assistive Technology e.g. laptop computers, hearing induction loops, dictaphones

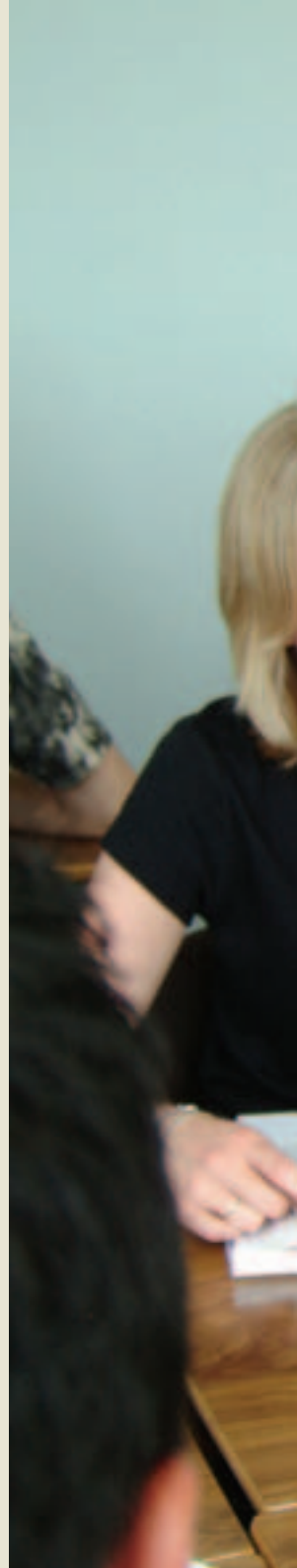


Chelmsford College welcomes learners of all abilities and has a dedicated team of staff who can offer a wide range of support.

Students who have experienced problems learning can feel confident that they will be treated with respect. We will establish the needs of each individual and put in place the best support package possible. This leaflet will describe the support which is on offer.

Each year Chelmsford College adds to the facilities on offer to students. Specialist facilities to date include:

- Hearing Loops in most areas
- Disabled toilets operated by RADAR keys
- Language Translation
- Information in non-written form
- Specialist Teaching areas all fully accessible
- Ramps
- Textphones
- Front of House staff who can use British Sign Language





Dyslexia diagnosis and support.

Chelmsford College employs a dyslexia support co-ordinator and seven specially trained dyslexia support tutors, all of whom are qualified to diagnose dyslexia in people aged 16 and above, and to offer specialist tuition (usually one hour a week of individual tuition) to dyslexic learners.

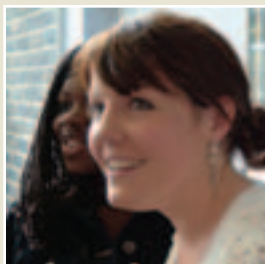
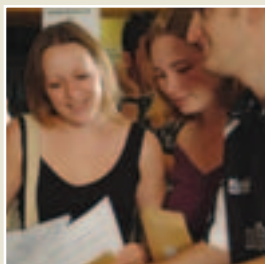
At Chelmsford College we recognise that dyslexia is a specific difficulty with language (affecting reading, writing, spelling, and sometimes speech and short term memory) which affects at least 10% of the population.

We know from experience that, without proper diagnosis and support, dyslexia is a disability which can create havoc in a person's life.

We know that dyslexia has nothing to do with intelligence and that sadly, many dyslexic learners have been labelled "stupid" or "lazy" for no good reason.

We also recognise, and have seen demonstrated over a number of years, that with proper support dyslexic learners can perform as well, or better than, their peers.

If you know you are dyslexic, or think you might be, then speak to your tutor who will arrange for you to be seen by one of the dyslexia support staff. Or contact Dr Clive Perrett, Dyslexia Support Co-ordinator, directly on **01245 293048**, or by email at **PerrettC@chelmsford-college.ac.uk**



**Moulsham Street
Chelmsford CM2 0JQ**

**Princes Road
Chelmsford CM2 9DX**

Both Sites Tel: 01245 265611

Moulsham Street Fax: 01245 349009

Princes Road Fax: 01245 346615

www.chelmsford-college.ac.uk